

THE GREAT LOGISTICS & PARKING SERVICES PRIVATE LTD.

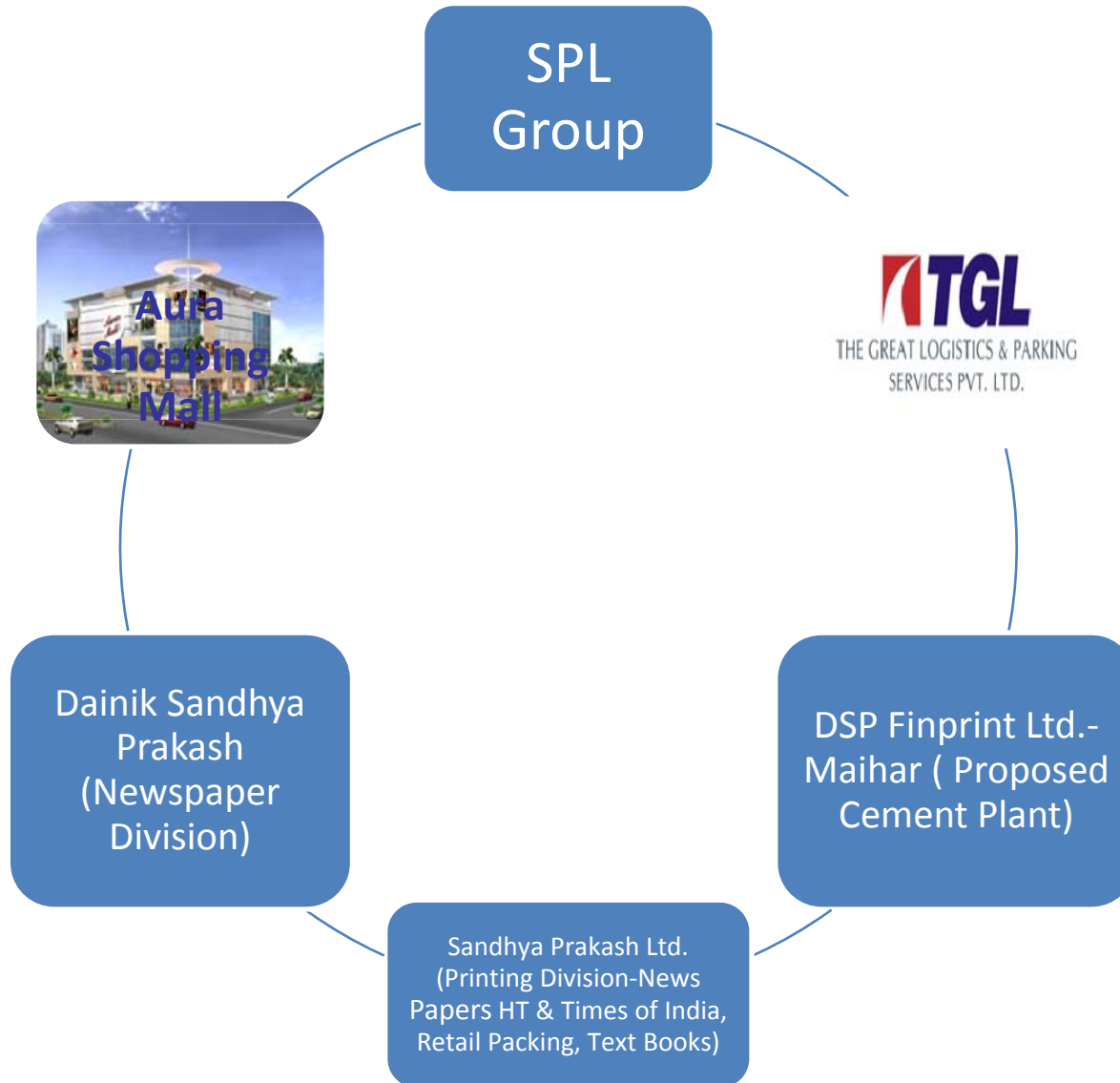
Company Profile

Introduction

We would like to introduce our selves as New Star on the horizon of Logistics Industry. TGL is being promoted by a 2000 Million Strong Sandhya Prakash Group.

The Group has diversified in a conglomerate of companies involved in Printing, Publishing, Packaging, Real Estate & Infrastructure Development, with strong Business ethics, Reliability and transparent Business Operations.

Group Introduction

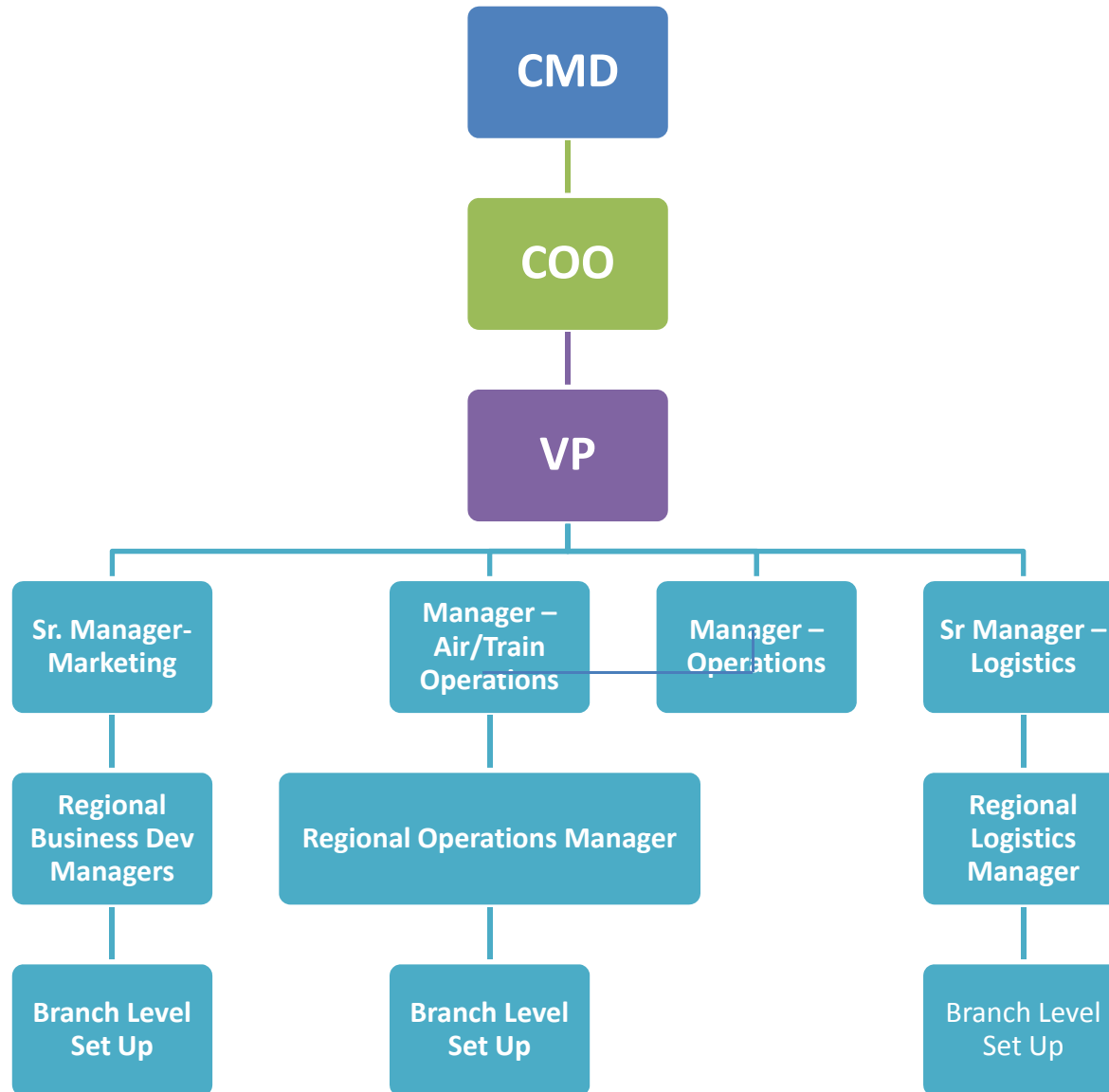


Management Team

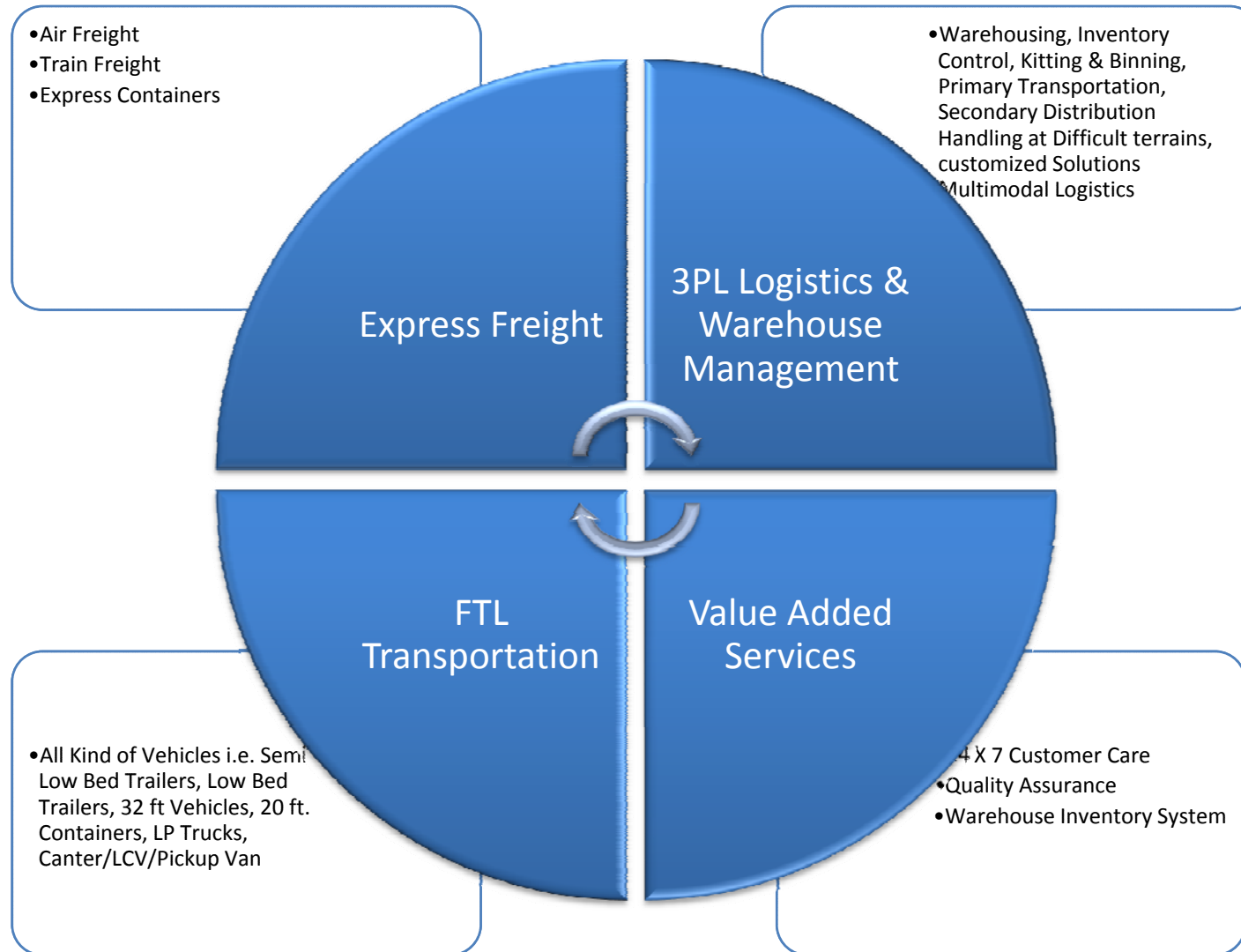
TGL is managed by core team of Logistics Industry Professional having more than 2 decades of experience in Planning and deliverables of Critical Distribution Management.

The team comprises of individuals having hands on experience in setting up distribution and logistics centers for complex logistics like Telecom, Electronics and Automotive Logistics along with other verticals.

Organizational Hierarchy



Range of Services



Logistics Capabilities

Air Freight Capabilities

- Door to Door Services
- Tie-up with All Major Airlines i.e. Kingfisher, Indigo, Jet Airways etc.
- Ability to Handle All kind of cargo
- Computerized Tracking
- Management Report

Train Freight Capabilities

- Door to Door Services
- Tie-up with All Major Railways Agencies
- Ability to Handle All kind of cargo
- Computerized Tracking
- Management Report

FTL Capabilities

- All Kind of Vehicles i.e. Semi Low Bed Trailers, Low Bed Trailers, 32 ft Vehicles, 20 ft. Containers, LP Trucks, Canter/LCV/Pickup Van
- Ability to Handle All kind of cargo
- Computerized Tracking
- Management Report

3PL Services Capabilities

- Warehousing
- In-house Inventory Control System
- Availability of Modern Infrastructure
- Experience of handling difficult sites
- Packaging & Secondary Distribution
- Having Experienced Logistics Team

Operation - Network

TGL is operative at Pan India Level having Branches and Franchisee at 60 locations. Major locations are

North Zone	East Zone	West Zone	South Zone
Gurgaon (Regional Office)	Kolkata (Regional Office)	Bhopal (Regional Office)	Banglore (Regional Office)
Delhi	Patna	Pune	Chennai
Ludhiana	Ranchi	Ahmedabad	Hydrabad
Noida		Indore	Cochin
Lucknow		Mumbai	
Chandigarh		Raipur	

Tracking & MIS Reports

Tracking:

TGL will provide Key Account Manager. Key Account Manager will be a single window source for all sort of information and communication related to movements of shipments. Also we have systems to provide accurate and timely information in form of following reports

MIS Reports:

- Daily Pick Up Report.
- Daily Delivery Report.
- In-transit Report
- Stock Reports.
- Inventory Ageing Analysis Report
- Legal/Statutory Forms Report
- Service Excellence Report.
- TAT Report.
- Customized Reporting.

Why TGL?

- **Services**
 - Quality on Time
 - Measurable
 - Reliable

- **Our Clients**
 - Are Industry Leaders
 - Have Long Term Commitment
 - Are Loyal
 - And our Partners in Growth

- **Investment Opportunity**
 - High Growth Sectors
 - Low TCO and High ROI
 - Value for Money
 - Scalable

- **Social Responsibility**
 - Upliftment of Knowledge
 - Life Style Enhancement
 - Efficient Logistics

- **Our Strength**
 - Quality Processes
 - Tested Procedures
 - Industry Experience
 - Global Delivery Model

- **People**
 - Industry Veterans
 - Creative Thinkers
 - Work as Team
 - Empowered
 - Personally Accountable

TGL Experience In Telecom Sector

Warehouse Management

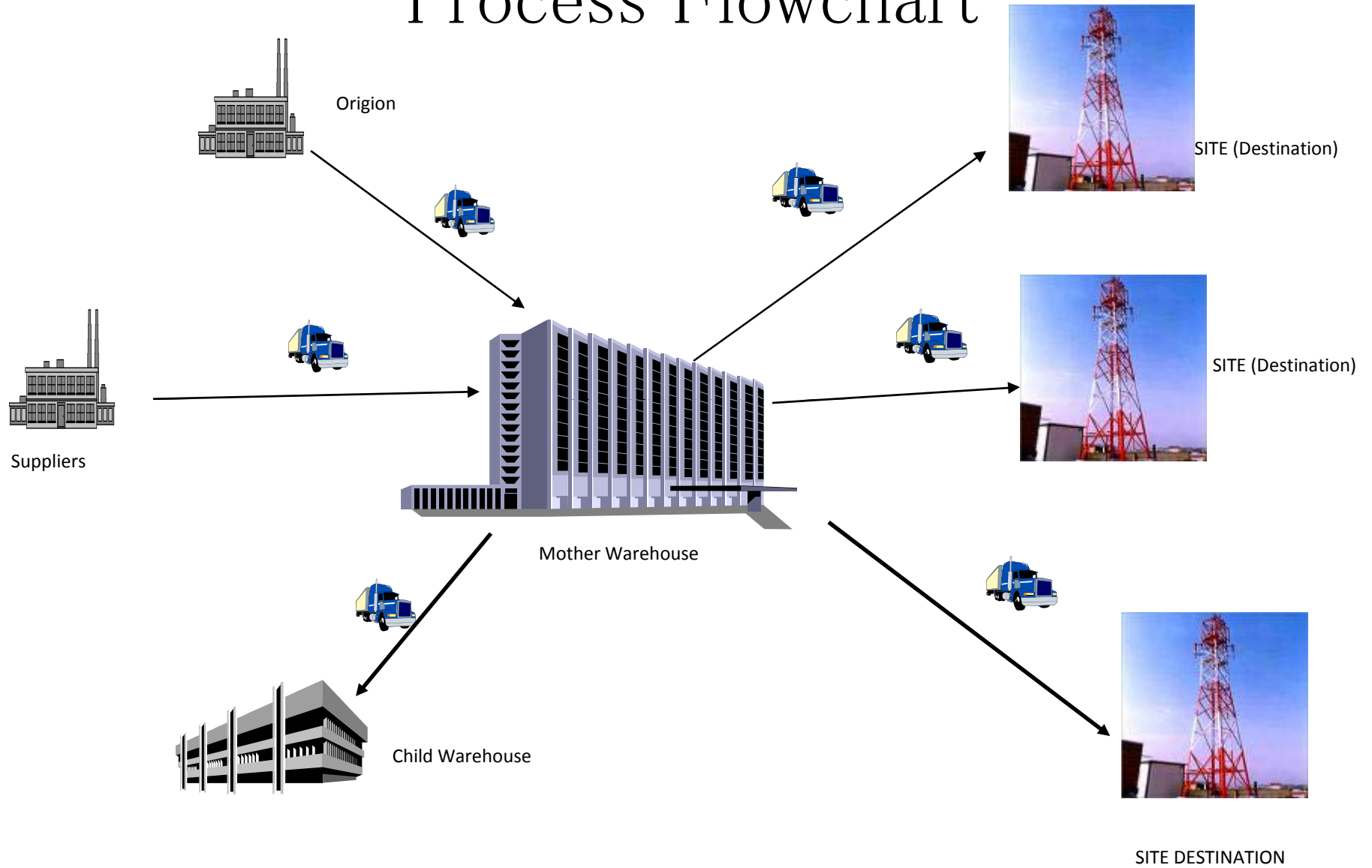
Warehouse Needs:

- Effective Layout for Warehouse on based of material category
- Racks Provision for Maximum optimisation of space
- Modern Infrastructure
- Experienced and trained manpower
- Material Stacking and placement norms
- Warehouse SOP
- Monthly Analysis of KPI
- Transparency
- Periodical reviews and training programs

The Process:

- Receipt of Material
- Checking with P.O.
- Placement of material as per designed layout
- System Up dation
- Receipt of orders
- Kitting and Packing
- Vehicles placement
- Dispatches of Material
- Coordination with Sites and Drivers
- Receipt of POD
- MIS Report

Process Flowchart



Our Major Clients

- Essar Telecom Infrastructure Pvt. Ltd.
- Synergy Telecommunications.
- M.J. Structures Pvt. Ltd
- Vanu India Pvt. Ltd
- Singer India Ltd.
- Metal Avenue

Logistics Park Project

(Mandideep – Madhya Pradesh)

About Logistics Park Project

TGL is developing Integrated Logistic parks across India and as their first project is constructing a Logistics Park for more than 600 vehicles with Logistic Hub having built up area of 1.5 million square feet in the satellite town of “Mandideep” on NH12 near Bhopal in the Central Indian Region of Madhya Pradesh. This project is on PPP (Public Private Participation) basis with MP Government agency MP Audhyogik Kenderiya Vikas Nigam (Bhopal Ltd).

Planned Facilities

- Parking facilities for about 600 + transport vehicles.
- Weigh bridge.
- Auto service & repair shops.
- Auto Spare Part Shops.
- Fuel pumps.
- Medical And Health Care Facilities.
- Offices for transporters.
- Fire brigade parking space.
- IT Integrated Customised Warehousing .
- Banking Facilities & ATM's.
- Restrooms / Dormitory.
- Hotels/Restaurants.
- Shopping Mall & Multiplex.
- Super-Markets/Grocery stores/clinic & medical shops.
- Units for Guesthouses.
- Computerised information system.
- Integrated web based technology wherever possible.
- CCTV'S at all places. communication linkages with the user industries.
- Token system for entry of the vehicles in the hub.
- State of the art monitoring centre.
- All Concrete Roads.
- Spacious Layout with Green Belt.
- World Class Amenities.
- Good Drainage Sewerage Facilities.
- Rain Water Harvesting System.



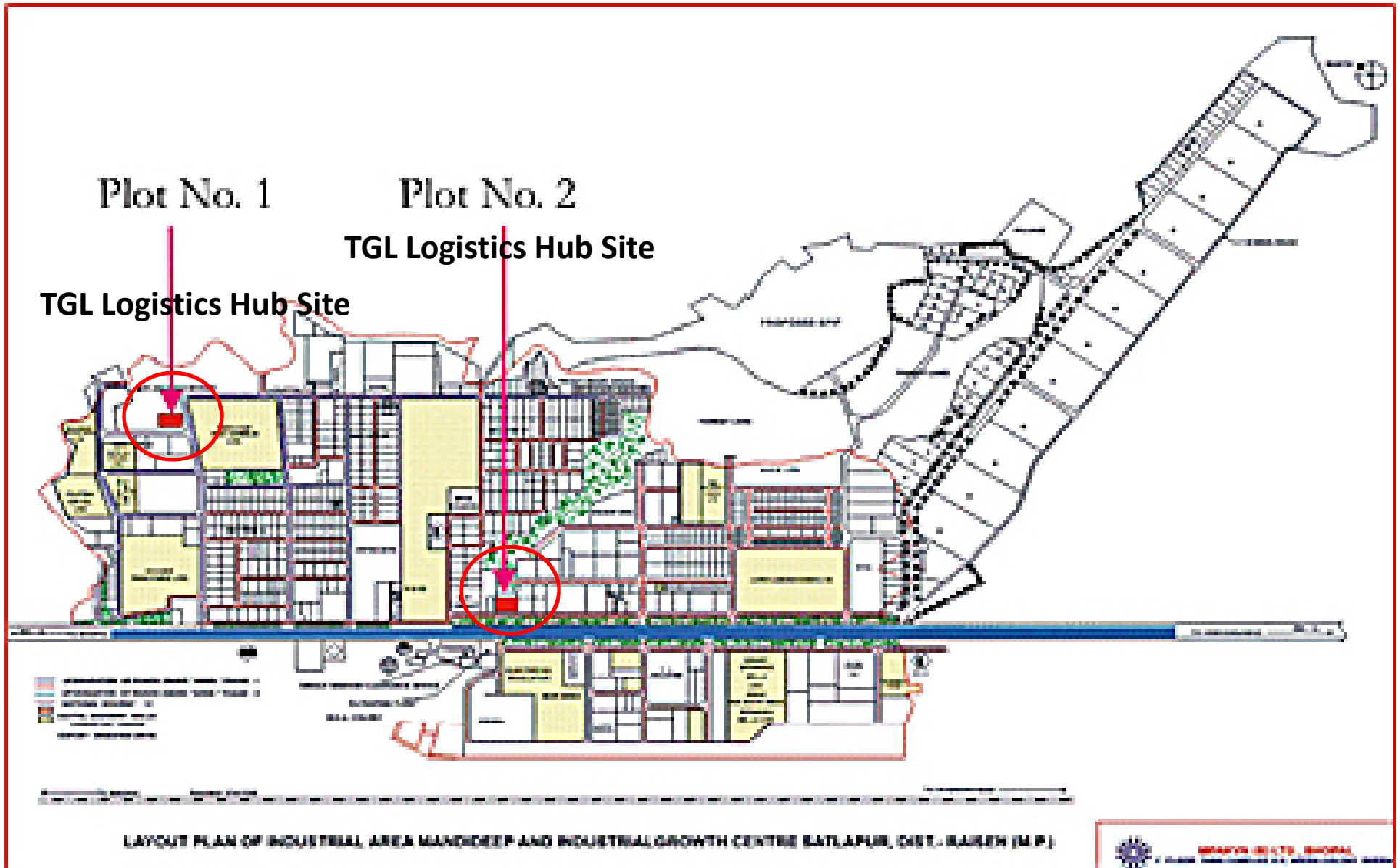
Location In India



Advantage

Advantage of Having Logistic hub near Bhopal that it is the Logistical Centre of India. Single warehouse can service multiple Locations.

Layout Plan for Mandideep Industrial Estate (744 Hectacre) on NH 12



Our Vision

At TGL we envision to provide tailor made productive and efficient Logistics Solutions to the industry by employing globally proven methods and strategies at optimum and rationale cost.

Our Mission

Is to become a responsive and dependable corporate entity admired for our ability to create efficient and effective solutions to the logistics needs of our customers.

In Summary

- Ability to offer Multi Model transportation and combination of Supply Chain Solution
- Warehousing
- All Kind of Packaging
- Secondary Distribution
- Experience of handling varied commodities
- Experience of handling difficult sites.
- Experience of Warehousing management
- Ability to cater IT based requirement

Thank You

Corporate Office:

The Great Logistics & Parking Services Pvt Ltd

Plot no. 40 ,Sector- 18 , Gurgaon-122001

Haryana, India.

E-mail gurgaon@indiaspl.com

Visit us at: www.indiaspl.com